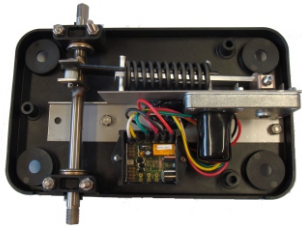


BMR 9000

Stop Arm, Crossing Arm, & Permanent Magnetic Lock Units
For use as stand-alone equipment



The BMR 9000 Stop Arm and Crossing Arm meet or exceed all compliance testing specifications in accordance with FMUSS 131, and SAE J1133 requirements.



BMR 9000 Versatility + Compatibility

- Direct connection to an existing competitor's harness.
- Easy connection to BMR harness with BMR9712H adaptor.

BMR 9000 Crossing Arm Features

- 2-year motor warranty.
- Internal micro processor electronics.
- Patented breakaway linkage.
- Stainless steel ½ inch 2-point drive shaft.
- Corrosion proof, two-piece injection-formed reinforced nylon housing.
- Extra large sealed oil bushings lubricated for life.
- 4-point anti-vibration mounting.
- Stainless steel fasteners.
- High visibility yellow anti-sag polycarbonate gate.
- Heavy-duty, 4-wire quick-disconnect wiring harness.
- Heavy duty 12-gauge hinge.
- Gate inhibit features.



Oil Bushing,
Actual Size.



BMR 8012 Integrated Magnetic Lock Features

- 8012 Integrated permanent magnetic lock.
- Featuring: sealed injection-formed reinforced nylon housing, stainless steel fasteners, quick-connect harness, and 24 hour full-time permanent magnetic lock security.



BMR 9000 Series Stop Arm Features

- 2-year motor warranty.
- Internal micro processor electronics.
- Patented breakaway linkage.
- Optional 180° breakaway hinge.
- Bronze bushings lubricated for life.
- Heavy duty, 16-gauge satin-coat steel, polyester painted construction.
- Stainless steel fasteners.

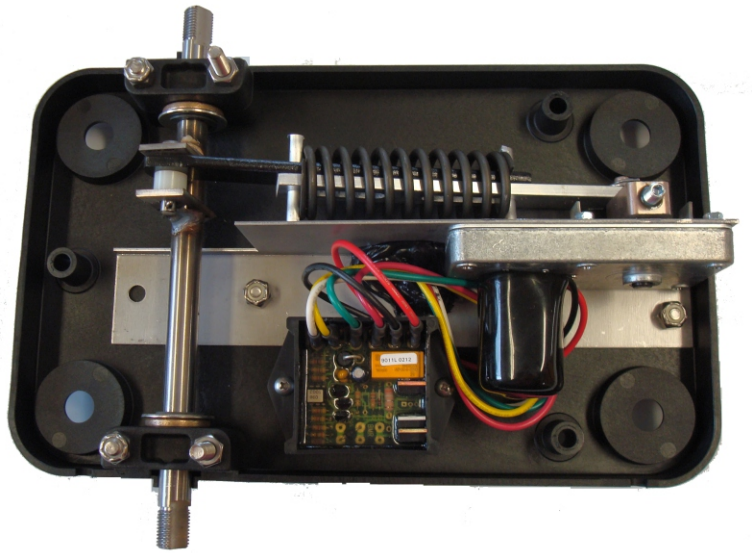
B.M.R. Manufacturing Inc.
Box 657
673 County Road # 38
Campbellford
Ontario K0L 1L0 Canada

Toll-free: 1-800-461-7660 • Phone: 1-705-653-4111 • Fax: 1-705-653-4454



www.bmr-mfg.ca

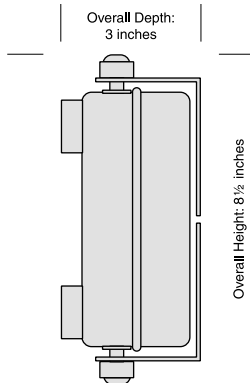
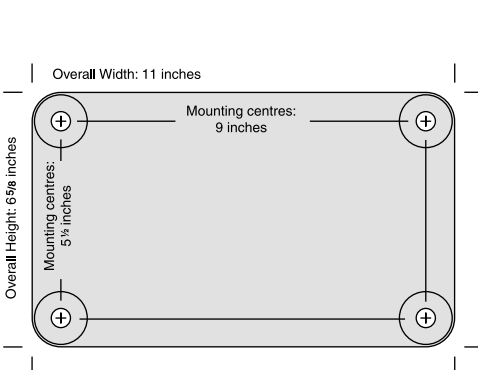
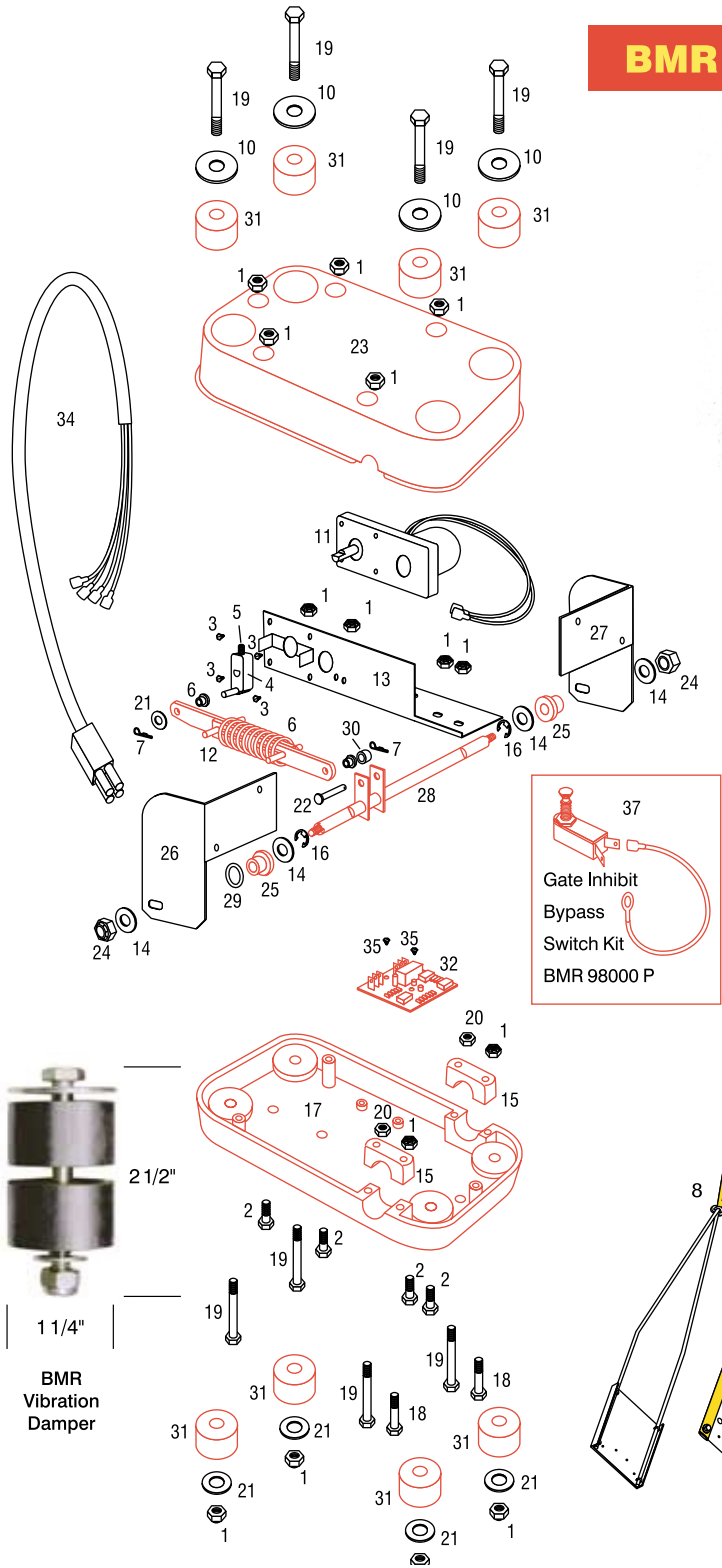
BMR 9000 School Bus Crossing Arm



* What sets us apart!

BMR 9000 Crossing Arm Parts List

1	BMR143	1/4"-20 Nylok Hex Nut
2	BMR175	1/4" x 1/2" S.S. Hex Head Bolt
3	BMR3003	8/32" x 1/2" Motor Mount Screw
4	BMR6002	Drive Arm
5	BMR6003	Set Screw
6	BMR6045	Linkage Arm Bushing
7	BMR2112	Cotter Pin
8	BMR68100	Wireloop Gate Assembly
9	BMR68550	Gate Assembly (Yellow Polycarbon)
10	BMR68775W	1/4" S.S. Fender Washer
11	BMR8000	Gear Motor
*12	BMR8004	Breakaway Linkage Arm 8"
13	BMR8005	Motor Mount
14	BMR8008	7/16" S.S. Washer
*15	BMR8015	Journal Cap
16	BMR8040	1/2" C. Clip
*17	BMR8101	Moulded Plastic Base
18	BMR8102	1/4" x 2" S.S. Hex Head Bolt
19	BMR8103	1/4" x 2 1/2" S.S. Hex Head Bolt
20	BMR8104	1/4" S.S. Nut
21	BMR8112	1/4" S.S. Washer
22	BMR8114	1" S.S. Clevis Pin
*23	BMR8125	Moulded Plastic Cover
24	BMR8143	1/2" 20 Lock Nut
*25	BMR8166	1/2" Oil Bushing
26	BMR8167L	Hinge (Top)
27	BMR8167R	Hinge (Bottom)
28	BMR8168	1/2" S.S. Drive Shaft
29	BMR8169	1/2" O-Ring Seal
30	BMR8176	1/4" Nylon Spacer
*31	BMR8177	Vibration Pad
*32	BMR9011L	Control Module, Potted
34	BMR9012H	Harness 4 Wire
35	BMR137	#8 x 3/8" S.S. Screw
*37	BMR98000 P	Gate Inhibit Bypass Switch Kit



www.bmr-mfg.ca